



## **PROFILE**

### **A Tradition of Excellence**

The winning combination of fast assembly and superior playing characteristics is now available in the PRO-KING portable basketball floor by Horner. Now the smallest gymnasium or largest arena can easily schedule a two event day.

The PRO-KING is constructed to meet the demands of professional and collegiate competition. Since 1891, Horner Flooring has been a leader in hard maple flooring. This tradition is reflected by the many floors currently in use by NBA teams and national recognized colleges and universities. Like all Horner basketball floors, the PRO-KING exceeds competitive standards for playability. In fact, a PRO-KING portable floor has been the floor of choice for the NBA All Star and NCAA Final Four games since 1983.

PRO-KING portables bridge the gap between the playing qualities inherent in permanent floors and the fast down requirements of a multi-event facility. Add to this the high quality appearance and detail finishing associated with all Horner floor systems and you will be convinced that the PRO-KING is a superior value.

### **Fastest Assembly Available**

The PRO-KING is the fastest and simplest portable to assemble on the market today. Requiring only 6-8 man hours by an experienced crew, this quality engineered floor can be put down and

ready for play. This unequalled time-saving performance is accomplished without special tools and no loose hardware to hold the floor together.

Consisting of 203 4' by 8' panels and 14 4' by 4' panels, the 60' by 112' floor is constructed with an accuracy that permits interchanging of panels subject to court markings. Interlocking finger joints at the panel ends with a tongue and groove fit at the sides allow perfect alignment. Since there are no continuous seams at the joints, the finished appearance is that of permanent strip flooring.

The PRO-KING is designed to be easily installed over concrete, synthetic or approved insulated floor of an ice arena. Each panel is easily guided into position with Horner's patented Pro-Pivot hinge and securely fastened by a sliding lock. Completely hidden from view, this patented system has no loose hardware to be mislaid or damaged during the frequent installation and disassembly required in a busy sports facility.

### **Superior Playing Characteristics**

Precision panels of northern hard maple are factory assembled over 1/2" underlayment board securely attached to 2" x 2" Thrust Joist Stringers providing a playing surface with the natural resiliency of wood. This natural resilience offers better footing and a "live" action feel. The result - a floor preferred by players everywhere.

The PRO-KING sub-floor fastening system affords total control of expansion due to normal changes in humidity. This assures a tight fitting and level playing surface. In addition, the hidden fastening system leaves the surface free of nails or locking hardware for greater safety. Players perform better with less fatigue and less chance of leg and ankle injuries.

### **Construction**

Each panel is constructed of 2 1/4" wide MFMA northern hard maple strip flooring over 1/2" underlayment board (1 1/2" wide maple strip flooring is also available). Attached with specially coated nailing cleats, the playing surface and underlayment is laid over accurately placed stringers to increase the stability of each panel. The maple flooring strips are individually fastened to each framing member. Specially coated nailing cleats provide more durable fastening than the commonly used powernails or face nails used in other floors.

The completed panels are sealed and finished with the finest oil-modified urethane available.

The Pro-Pivot, slide lock, end connectors and Pro-Lock are fabricated from 1/4" steel. This hardware is securely bolted and screwed to framing members, underlayment and maple flooring. Combined with the flooring's own tongue and groove construction, this system assures resistance to loosening and damage during installation.

Your PRO-KING portable is sanded and finished in our own facilities under controlled temperature and humidity conditions. After the floor is completely sealed, court markings are expertly applied by our finishing staff. After painting, three coats of finish are applied.

The completed floor is allowed to dry for a minimum of 72 hours before being shipped. All panels are marked to facilitate identification. Final adjustment to the floor will be done at your site as part of the first installation. Our representative will instruct your crew in the best way to assemble and

disassemble the floor as well as explain the best way to handle, store and maintain the PRO-KING floor.

### **Accessories Available**

Storage trucks provide mobile storage and the most convenient means to keep each section in proper rotation for easy placement and removal. These trucks are all steel low-bed design and provided with the correct wheels to accommodate the particular surface on which they will be moved.

We can also provide a built in Volleyball System whereby no holes have to drilled into the concrete slab. This saves much time in the installation process and disassembly procedure.

### **Horner Quality Saves Money**

PRO-KING portables are manufactured at the same site as the MFMA maple flooring used to fabricate them. This results in superior quality control that pays dividends over the long run. Our tough northern hard maple is unequalled for resistance to wear and identification.

Our Pro-Pivot system offers significant savings in labor costs and down time between events. When you add up all the benefits, you will be convinced that the PRO-KING is indeed the move to make in portable basketball floors.

### **International Acceptance**

Horner's PRO-KING has been used in such international events as the 1983 World University Games in Edmonton, Alberta, Canada, the 1983 and 1987 Pan-American Games held in Venezuela and Indianapolis, respectively, the 1984 Los Angeles Olympic Games, the 1990 Goodwill Games in Seattle, the Japan-NBA Opening Games in Tokyo and Yokohama, the 1993 European Championship in Munich, Germany, and the McDonalds-NBA games for 1988-1993 in Milwaukee, Madrid, Rome, Barcelona, Paris and Munich. In 1994, the PRO-KING was the floor chosen for the World Championship of Basketball in Toronto, Ontario, Canada, where it was used in Copps Coliseum, Maple Leaf Gardens and the Sky Dome. Horner's PRO-KING is the fastest selling portable available, accepted worldwide as the leader in portable floors.

## **SPECIFICATIONS**

### **Scope of Work**

It is the intent of this section to furnish all materials and complete instructions for installing a PRO-KING Portable Basketball Floor over concrete, synthetic or approved insulated floor when installation will be made over an ice sheet. Work shall include section (panel fabrication), sanding and court markings in accordance with owner's instructions, finishing and assembly at owner's facility. Material and workmanship shall result in completed floor for use in International, College and Professional competition. The facility personnel shall be instructed in assembly and disassembly of the floor by a qualified representative of the manufacturer.

The portable basketball floor size shall be 60' by 112', or as requested by owner subject to the following: the length and width can each be increased or decreased in multiples of 4'. Sections of the floor shall be jig built with accuracy that will permit interchanging of sections subject to court markings. Both 8' and 4' sections shall be furnished to permit staggering of section end joints preventing one continuous joint running across full width of floor. Appearance when complete shall be that of a permanent basketball floor.

### **Materials**

1. The playing surface shall be 25/32" x 2 1/4" MFMA Northern Hard Maple. No beech or birch flooring shall be used. If called for, a MFMA certificate is available. Option: 25/32" x 1 1/2" Northern Hard Maple.
2. Underlayment shall be 48" x 96" x 1/2" securely attached to 2" x 2" Timber Strand LSL framing.
3. Fasteners shall be coated 15 gauge staples or equivalent nailing cleats. No screw-tite, powernails, or cut nails shall be permitted.
4. Hidden Pro-Pivot sliding lock and end connectors shall be of 1/4" steel.
5. Floor sealer and finish shall be Oil Modified Urethane Finish. Court marking paint color shall be submitted to floor manufacturer for approval.

#### **OPTIONS:**

1. When selecting Pro-King<sup>®</sup> Plus, Pro-Shock<sup>™</sup> pads shall be installed on each stringer as per manufacturer's specifications.
2. Side and end profile of each panel may consist of Skatelite<sup>®</sup> tongues and "Z" clip galvanized steel grooves if so requested.
3. Profimax<sup>®</sup> underlayment may be used in areas of expected high relative humidity to protect against moisture, fungus, and insect penetration.

## **Fabrication of Sections**

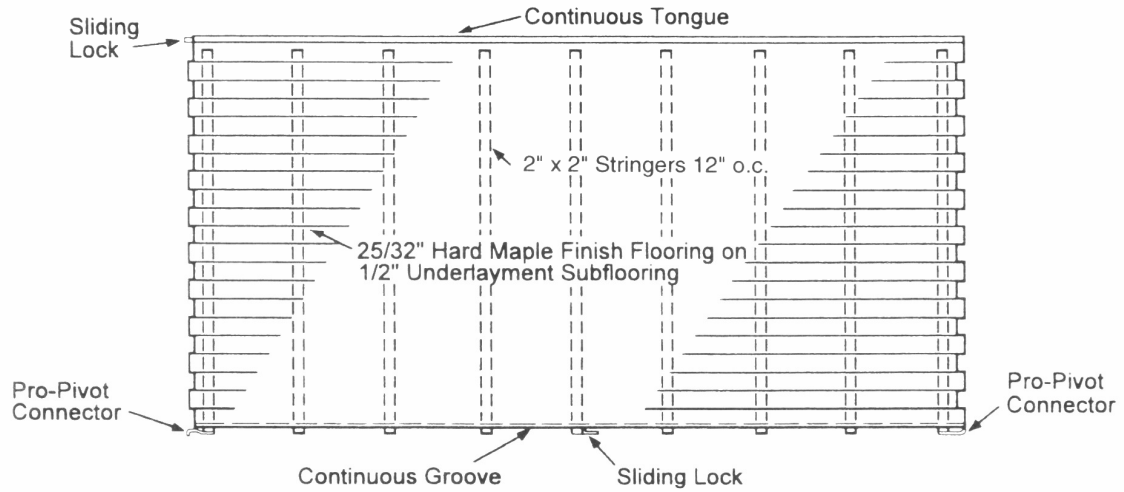
1. Floor sections shall be jig built as per shop print to attain maximum accuracy. Each 8' section shall incorporate vertically placed framing members. Underlayment shall be fastened to framing members 6" o.c.
2. Maple flooring strips are fastened to each framing member. Expansion shall be as decided by manufacturer after considering geographical locations and considering conditions in the building where the floor will be used. Interlocking finger joints shall be provided at section ends. (Option: square end panel incorporating a plastic tongue and Pro-Fast fastener.) Sides and ends shall be tongue and groove fit incorporating wood tongue and groove or optional plastic tongue. Appearance, when sections are put together, shall be that of a permanent floor.
3. Hidden Pro-Pivot hinge, sliding lock, end connectors and Pro Lock shall be bolted to framing members at pre-determined locations. These locking devices shall be concealed from view.
4. After sections have been fabricated, the floor shall be laid over a smooth, level base in a temperature controlled area.
5. After floor is properly laid in place, power sanding shall commence in strict accordance with instructions of manufacturer of sealer and finish selected. All steps in the sanding, sealing, court markings and finishing shall be performed by men experienced in this type of work. All painting shall be performed after floor has been properly sealed. After painting, three coats of finish shall be applied.
6. After the finished floor has been completed, it shall be left to dry under controlled conditions for a minimum of 72 hours. After drying has been completed, the floor will be shipped by flat-bed truck to owner's building site.
7. All panels shall be marked with letters and numbers to facilitate identification.
8. Final adjustment to the floor shall be at owner's facility as part of the first installation.
9. Shop drawings and details will be forwarded at owner's request prior to start of fabrication of panels.

## **Installation at Owner's Facility**

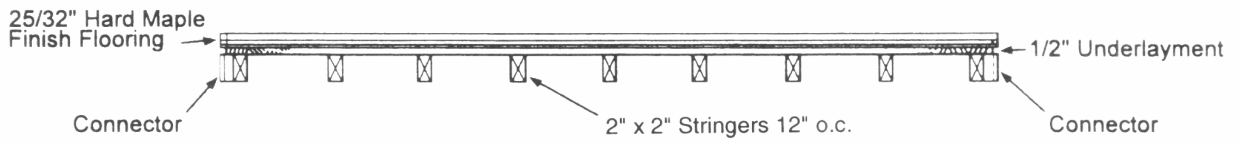
1. When requested by owner, floor shall be shipped to building site. Floor shall be shipped in units of fourteen sections, steel strapped together for fork lift unloading. Finished faces of sections shall be separated with suitable material to prevent damage. Unloading shall be performed under guidance of manufacturer's representative.
2. Manufacturer's representative shall be sent to arena site at manufacturer's expense to direct first installation of floor.
3. Area in which floor is to be laid shall be clean, dry and ready to receive floor. Subfloor surface shall be held to within a tolerance of 1/8" in 10 feet in any direction.

4. Owner shall provide at least a four man crew at no expense to the manufacturer including one lead man of supervisory capacity to be instructed by the factory representative in the best way to assemble and disassemble the floor and explain the proper handling, storage and maintenance and to answer any questions that may arise prior to his departure.

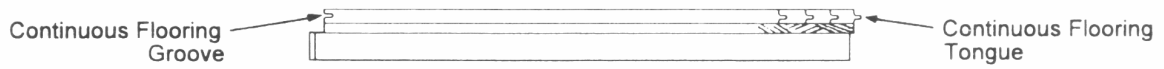
# DETAIL OF PANELS



TOP PANEL PLAN

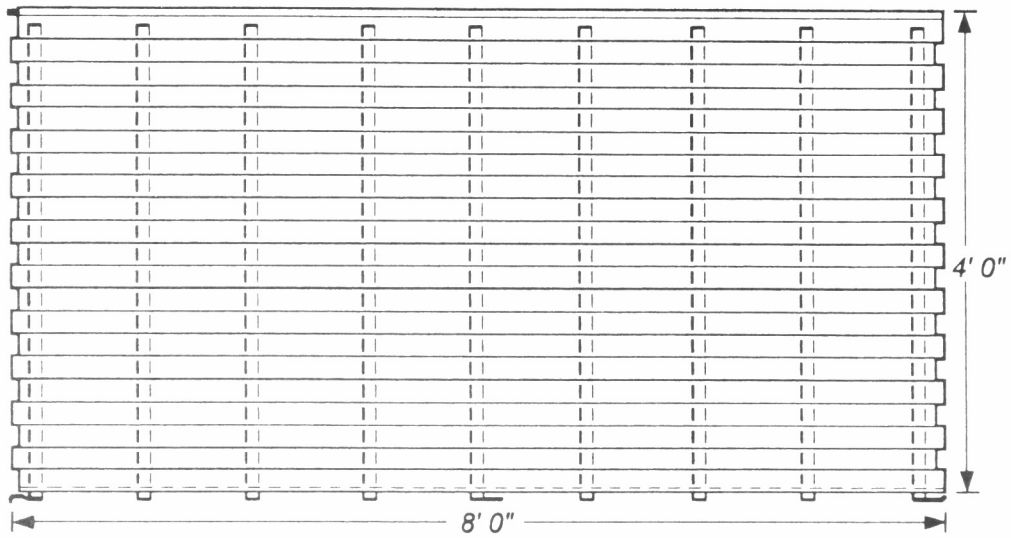


SIDE VIEW



END VIEW

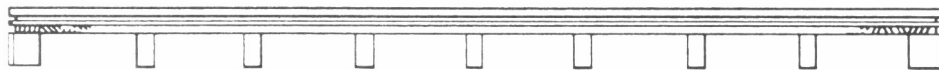
*Panel Plan View*



*End View*



*Side View*

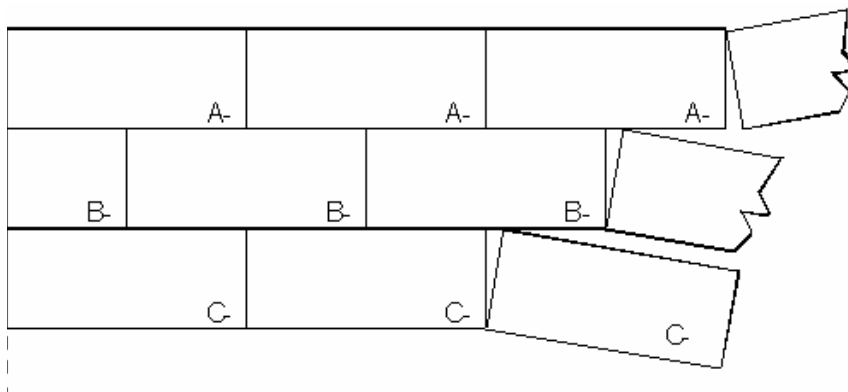
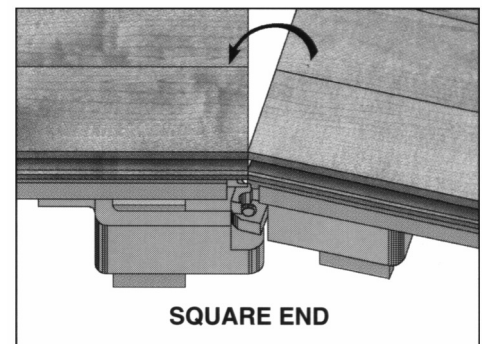
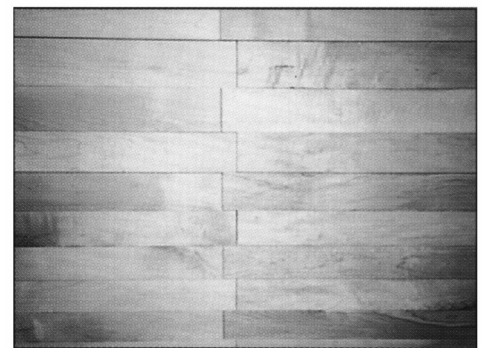
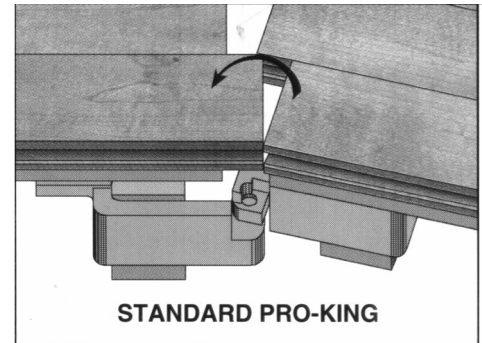


## INSTALLATION INSTRUCTIONS

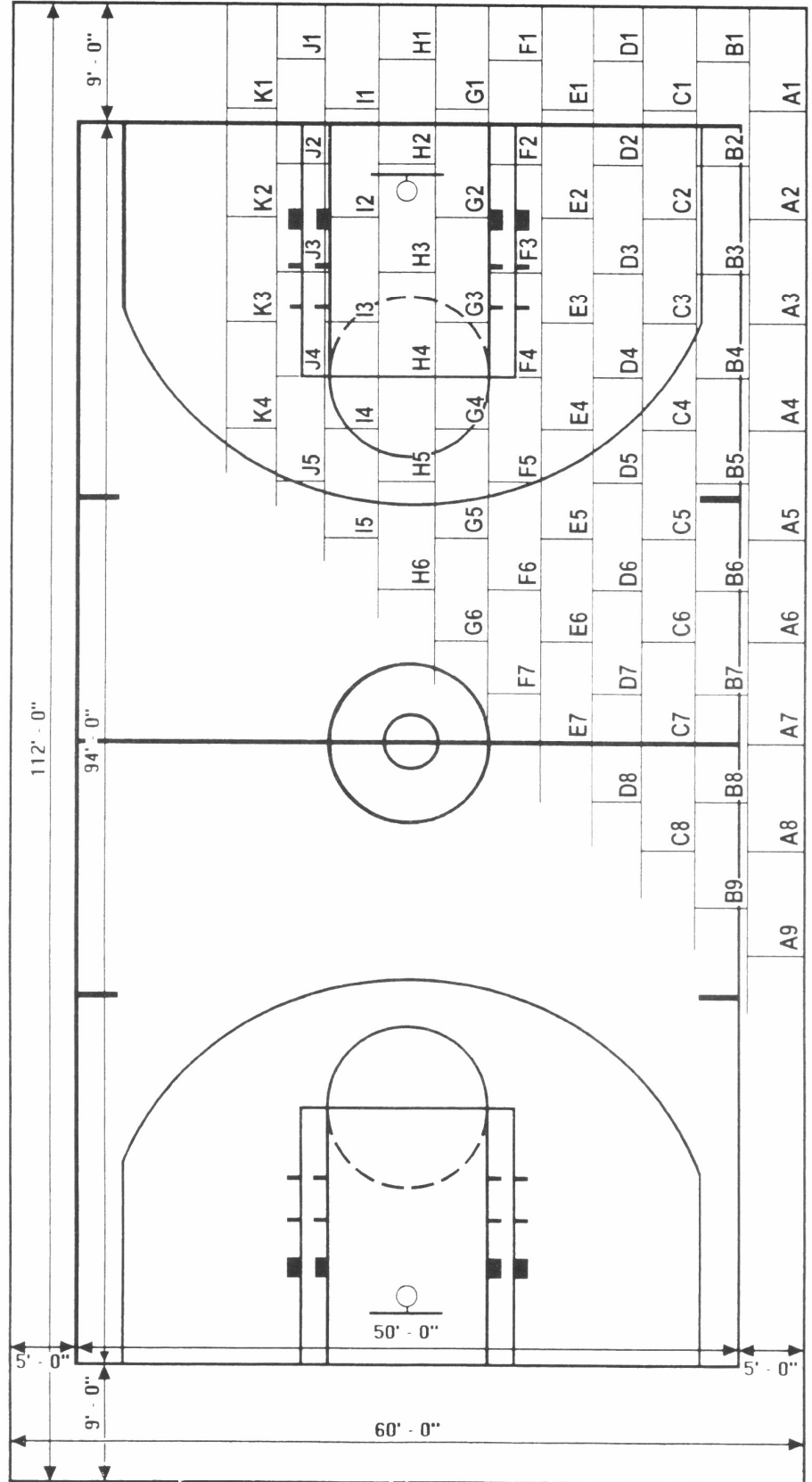
1. Find starting point for Panel A-1. Set Panel A-1 on floor at starting point. Place Panel A-2 next to the end of A-1 at an angle of approximately 45°. Engage Pro-Pivot. Swing Panel A-2 clockwise, making sure Panels A-1 and A-2 butt tightly together. Follow same procedure with remainder of Row A.

Note: If arena has a camera area, Row A should be located on the same side of the arena as the camera area.

2. Start Row B with Panel B-1. (Panel B-1 will be a 4' x 4' panel). Slide the panel in place by engaging the sliding lock into the U-shaped end lock. Angle of B-1 should be approximately 5°. Slide panel B-1 counter-clockwise. Place panel B-2 next to the end of B-1 at an angle of approximately 45°. Engage Pro-Pivot and swing panel B-2 counter-clockwise into place. Continue remainder of Row B. When Panel B-14 has been set into place, tighten nut on end of locking hardware.
3. Row C through Row O are installed in the same manner as Row B.



# PANEL FLOOR PLAN



## **CARE AND MAINTENANCE INSTRUCTIONS**

### **Storage Area**

Storage area should be dry and well ventilated. The area should be heated to a minimum of 60° and relative humidity should be in the 45% to 55% range.

### **Moving Panels To and From Storage Area**

Storage carts are available to move the portable floor from storage area to arena and back. Each row should have its own storage cart.

Fork lift truck may be used if simple precautions are taken. Forks should be extended to 48" to give solid lift to whole panel. Forks should spread 42" to prevent tipping.

When stacking floor, care should be used to place panels face to face then back to back. Protectors should be placed between panel faces. Material shipped with the floor may be used. Panels will nest for storage.

### **Finish Protection**

Your portable basketball floor has been finished with four (4) coats of the finest oil modified urethane available. This should, under normal wear, give one to two years of excellent service. The floor should be dry mopped with a cotton sweeping mop before each game, during half-time and prior to storage to remove any grit that might be on the surface. If floor is left down for a longer period of time, mop surface daily.

In-house refinishing can be done under the direction of floor manufacturer

## **INSTALLATION REFERENCES**

### **NATIONAL COLLEGIATE ATHLETIC ASSOCIATION (NCAA) – MEN’S FINAL FOUR**

1986 NCAA Final Four - Dallas  
1987 NCAA Final Four - New Orleans  
1988 NCAA Final Four - Kansas City  
1989 NCAA Final Four - Seattle  
1990 NCAA Final Four - Denver  
1991 NCAA Final Four - Indianapolis  
1992 NCAA Final Four - Minneapolis  
1993 NCAA Final Four - New Orleans  
1994 NCAA Final Four - Charlotte  
1995 NCAA Final Four - Seattle  
1996 NCAA Final Four - New York  
1997 NCAA Final Four - Indianapolis  
1998 NCAA Final Four - San Antonio  
1999 NCAA Final Four - St. Petersburg  
2000 NCAA Final Four - Indianapolis  
2001 NCAA Final Four - Minneapolis  
2002 NCAA Final Four - Atlanta  
2003 NCAA Final Four - New Orleans  
2004 NCAA Final Four – San Antonio  
2005 NCAA Final Four – St. Louis

### **NCAA – WOMEN’S FINAL FOUR**

1989 Women’s NCAA Final Four - Tacoma  
1990 Women’s NCAA Final Four - Knoxville  
1991 Women’s NCAA Final Four - New Orleans  
1992 Women’s NCAA Final Four - Los Angeles  
1993 Women’s NCAA Final Four - Atlanta  
1994 Women’s NCAA Final Four - Richmond  
1995 Women’s NCAA Final Four - Minneapolis  
1996 Women’s NCAA Final Four - Charlotte  
1997 Women’s NCAA Final Four - Cincinnati  
1998 Women’s NCAA Final Four - Kansas City  
1999 Women’s NCAA Final Four - San Jose  
2000 Women’s NCAA Final Four - Philadelphia  
2001 Women’s NCAA Final Four - St. Louis  
2002 Women’s NCAA Final Four - San Antonio  
2003 Women’s NCAA Final Four - Atlanta  
2004 Women’s NCAA Final Four - New Orleans  
2005 Women’s NCAA Final Four - Indianapolis

### **MEN’S NATIONAL BASKETBALL ASSOCIATION (NBA) – ALL STAR GAME EVENTS**

1985 NBA All-Star Game - Indianapolis  
1986 NBA All-Star Game - Dallas  
1987 NBA All-Star Game - Seattle  
1988 NBA All-Star Game - Chicago  
1989 NBA All-Star Game - Houston  
1990 NBA All-Star Game - Miami  
1991 NBA All-Star Game - Charlotte  
1992 NBA All-Star Game - Orlando  
1993 NBA All-Star Game - Salt Lake City  
1994 NBA All-Star Game - Minneapolis  
1995 NBA All-Star Game - Phoenix  
1996 NBA All-Star Game - San Antonio

1997 NBA All-Star Game - Cleveland  
1998 NBA All-Star Game - New York  
1999 NBA All-Star Game - No event this year  
2000 NBA All-Star Game - Oakland  
2001 NBA All-Star Game - Washington, D.C.  
2002 NBA All-Star Game - Philadelphia  
2003 NBA All-Star Game – Atlanta  
2004 NBA All-Star Game – Los Angeles  
2005 NBA All-Star Game – Denver  
2006 NBA All-Star Game - Houston

### **NBA MCDONALD'S OPEN**

1987 Milwaukee, WI  
1988 Madrid, Spain  
1989 Rome, Italy  
1990 Barcelona, Spain  
1991 Paris, France  
1993 Munich, Germany  
1995 London, England  
1997 Paris, France  
1999 Milan, Italy  
2001 Stockholm, Sweden (cancelled due to September 11th tragedy)

### **NBA TEAMS**

Chicago Bulls  
Detroit Pistons  
Denver Nuggets  
Dallas Mavericks  
Golden State Warriors  
Milwaukee Bucks  
Minnesota Timberwolves  
New Orleans Hornets  
Seattle SuperSonics  
Toronto Raptors  
Utah Jazz

### **WOMEN’S NATIONAL BASKETBALL ASSOCIATION (WNBA) – TEAMS**

Chicago Sky  
Detroit Shock  
Minnesota Lynx  
Seattle Storm

### **SPECIALTY CONTRACTS**

1983 Pan American Games – Caracas, Venezuela  
1984 Olympic Games – Los Angeles, CA  
1985 Bolivarian Games – Coval, Ecuador  
1987 Pan American Games – Indianapolis, IN  
1989 Pan American Games – San Juan, PR  
1990 Goodwill Games – Seattle, WA  
1991 Hall of Fame – Springfield, MA  
1992 Tournament of the Americas (Pre-Qualifications – Olympics)  
1993 European Championships – Munich, Germany  
1994 World Championships – Toronto, Canada  
2000 Olympic Games – Sydney, Australia

### **AMATEUR TRAINING CENTERS**

Olympic Training Center - Lake Placid, NY  
Olympic Training Center - Colorado Springs, CO

Women's Training Center - Republic of China  
Brisbane Entertainment Center - Brisbane, Australia  
Dominican Republic  
Puerto Rico Training Center  
Coval, Ecuador  
Nassau, Bahamas (2)  
Sydney Entertainment Center - Sydney, Australia  
Perth Entertainment Center - Perth, Australia  
Tobago, West Indies

## **COLLEGES AND UNIVERSITIES**

Alabama State University  
Auburn University  
Baylor University  
Binghamton (New York) State University  
Boise State University  
Boston College  
Bridgeport State University  
Bridgewater State University  
Centenary University  
Central Michigan University  
Central Missouri State University  
Coastal Carolina University  
Columbus State University  
Eastern Michigan University  
East Tennessee State University  
Fordham University  
Florida State University  
Hartford University  
Jacksonville University  
Lincoln University - Tennessee  
Louisiana Tech University  
Marshall University  
Massachusetts Institute of Technology  
McNeese State University  
Mercer University  
Michigan State University  
Mississippi State University  
Montana State University  
Moorhead State University  
North Dakota State University  
Northern Illinois University  
Northern Iowa University  
Northern Michigan University  
Northwood University  
Ohio State University  
Pacific University  
Penn State University  
Radford University  
San Diego State University  
South Dakota University  
Southern Indiana University  
Southern University  
Syracuse University  
St. John's University - New York  
Temple University  
Texas A & I  
Texas Southern University  
University of Alaska - Fairbanks  
University of Alberta  
University of Arkansas - Little Rock  
University of Central Florida  
University of Delaware

University of Denver  
University of Detroit  
University of Kansas  
University of Maine  
University of Maryland - Baltimore  
University of Nevada - Reno  
University of Oregon  
University of South Carolina  
University of South Carolina - Aiken  
University of Southern Colorado  
University of Tennessee (2)  
University of Texas - Arlington  
University of Toronto  
University of the Virgin Islands  
University of Wisconsin  
Villanova University  
Wake Forest University  
Western Carolina University  
Western Michigan University  
Willamette College

## **COLISEUMS AND ARENAS**

Freedom Hall Center - Johnson City, TN  
Copp's Coliseum - Hamilton, Ontario, Canada  
Erie Civic Arena - Erie, PA  
Kingdome - Seattle, WA  
Pontchartrain Center - Kenner, LA  
Morris F.X. Auditorium - New Orleans, LA  
Mobile Civic Center - Mobile, AL  
The Palace of Auburn Hills - Rochester, MI  
Blaisdell Center - Honolulu, HI  
Kohl Center - Madison, WI  
Bradley Center - Milwaukee, WI  
Bi-Lo Center - Greenville, SC  
Cobo Hall - Detroit, MI  
Springfield Civic Center - Springfield, MA  
Manatee Civic Center - Palmetto, FL  
Pensacola Civic Center - Pensacola, FL  
Ice Palace - Tampa Bay, FL  
Aztec Bowl Arena - San Diego, CA  
Memorial Arena - Hibbing, MN  
State Fairgrounds - Birmingham, AL  
Cumberland County Arena - Fayetteville, NC  
Denver Coliseum - Denver, CO  
Savannah Civic Center - Savannah, GA  
Augusta Civic Center - Augusta, GA  
Metro Dome - Minneapolis, MN  
Mayo Civic Center - Rochester, MN  
Defense Depot - Ogden, UT  
Schottstein Center - Columbus, OH  
Louisville Gardens - Louisville, KY  
Hartford Civic Center - Hartford, CT  
Jacksonville Coliseum - Jacksonville, FL  
Reunion Arena - Dallas, TX  
Metro Centre - Rockford, IL  
Silver Dome - Detroit, MI  
McNichols Arena - Denver, CO  
City of Indianapolis - Indianapolis, IN  
Hoosier Dome - Indianapolis, IN  
The Pyramid - Memphis, TN  
Georgia Dome - Atlanta, GA  
Saginaw Civic Center - Saginaw, MI  
Hirsch Coliseum - Shreveport, LA

The Forum Civic Center - Rome, GA  
Tupelo Coliseum - Tupelo, MS  
St. Paul Civic Center - St. Paul, MN  
Macon Coliseum -- Macon, GA  
Fargo Dome - Fargo, ND  
Oberhausen Arena – Oberhausen, Germany  
The Sky Dome - Toronto, Ontario, Canada  
The Palladium - Ottawa, Ontario, Canada

## **REFERENCE CONTACTS**

### **NBA Office - NBA All Star Floor (1983-2006)**

645 Fifth Avenue  
New York, NY 10022  
Matt Winnick, Stu Jackson  
212-826-7000 (Phone)

### **NCAA Office - Final Four Men's & Women's (1983-2005)**

700 West Washington Street  
Indianapolis, IN 46206  
Bill Hancock  
312-917-6222 (Phone)  
312-917-6888 (Fax)

### **Alamo Dome (San Antonio Spurs)**

100 Montana Street  
San Antonio, TX 78203  
Jim Mery  
210-207-3661 (Phone)

### **Auburn University**

Joel H. Eaves Memorial  
Auburn, AL 36849  
Tom Sparrow  
205-826-4442 (Phone)  
205-926-2399 (Fax)

### **Bradley Center**

1001 North Fourth Street  
Milwaukee, WI 53203  
Kea Callis  
414-227-0427 (Phone)  
414-227-0497 (Fax)

### **Bryce Jordan Center, Penn State University**

State College, PA 16802  
Bob Howard, Director  
814-865-7215 (Phone)

### **Delta Center Arena**

301 West South Temple  
Salt Lake City, UT 84101  
Scott Williams -- Doug Knudsen  
801-325-2000  
801-325-2516

### **H. H. Humphrey Metrodome**

Minneapolis, MN 55415  
Dennis Alfton -- Bill Lester  
612-335-3314 (Phone)  
612-332-8334 (Fax)

### **Hoosier Dome**

100 South Capitol Avenue  
Indianapolis, IN 46225  
Mike Fox  
317-262-3685 (Phone)  
317-262-3403 (Fax)

### **Leon County Civic Center (Florida State University)**

505 West Pensacola Street  
Tallahassee, FL 32301  
Ron Spencer  
850-487-1691 (Phone)  
850-222-6947 (Fax)

### **The Palace of Auburn Hills**

One Championship Drive  
Auburn Hills, MI 48057  
Mike Roche  
248-377-8293 (Phone)  
248-377-4263 (Fax)

### **University of Central Florida**

500 North Gemini Boulevard  
Orlando, FL 32816  
Terry Genovese  
813-823-3070 (Phone)  
407-823-0248 (Fax)